

# ***St Elizabeth's Catholic Primary School***



## ***2016 Compliance Data***

## Contextual Information

St Elizabeth's Catholic Primary School is situated in a natural bush setting in Hocking. The school is within the City of Wanneroo, 27 kilometres to the CBD in Perth and 9.9 kilometres from the Indian Ocean. Stage One of the building program is completed which includes the Early Years Learning Centre, Administration, Undercover Area, Hard Court and excellent playground facilities for the Junior Primary children. We also have Camp Australia Before and After School Care for enrolled students. The school buildings are purpose built for teaching and learning in the 21<sup>st</sup> Century. As our enrolments grow so will the completion of the building program, eventually becoming a double stream Pre-Kindergarten to Year Six.

We come under the umbrella of St Anthony of Padua's Parish. Father John Daly, the Parish Priest is an integral part of our school life particularly in guiding and supporting our Catholic faith traditions for parents, students and staff.

We continue to develop a very strong, nurturing community with the staff and parents sharing a proactive approach to the development the whole child spiritually, socially, emotionally, physically and mentally.

This year we commenced our Community Play Group with nineteen children, this has remained constant over the year and will continue in 2017. Currently we are waiting on the appropriate numbers to commence our three-year-old program.

## Teacher Standards and Qualifications

All teaching staff at St Elizabeth's Catholic Primary School;

- are registered and financial with the Teacher's Registration Board of WA
- have completed training in Mandatory Reporting of Sexual Abuse – Legislative Requirement
- with all staff holding a current Senior First Aid Certificate

Bachelor of Education            3  
Master of Education            2

## Workforce Composition

Teaching Staff	Non Teaching Staff
Males – 0	Males – 1
Females – 5	Females – 4
Indigenous Staff – 0	Indigenous Staff – 0
Full Time Equivalent – 4	Full Time Equivalent – 3.41

## **Student Attendance at School**

In 2016 the average attendance of students was **92.6%** consisting of

Kindergarten 94.78%

Pre Primary 90.83%

Year One 92.19%

## **Non Attendance Management**

Non attendance is followed up in the following manner;

- All parents to write an absentee note when a child is noted absent in SEQTA. Reminder forms are sent out to parents who have not sent a note.
- Parents removing children for holidays during the school term must complete a note giving the dates the child will be away from school.
- Teachers follow up students who are absent and supported by the Administration Staff with telephone calls.
- Parents are sent a letter for continual late attendance and regular non attendance
- If necessary, the Principal will speak to the parents if there are unexplained absenteeism.

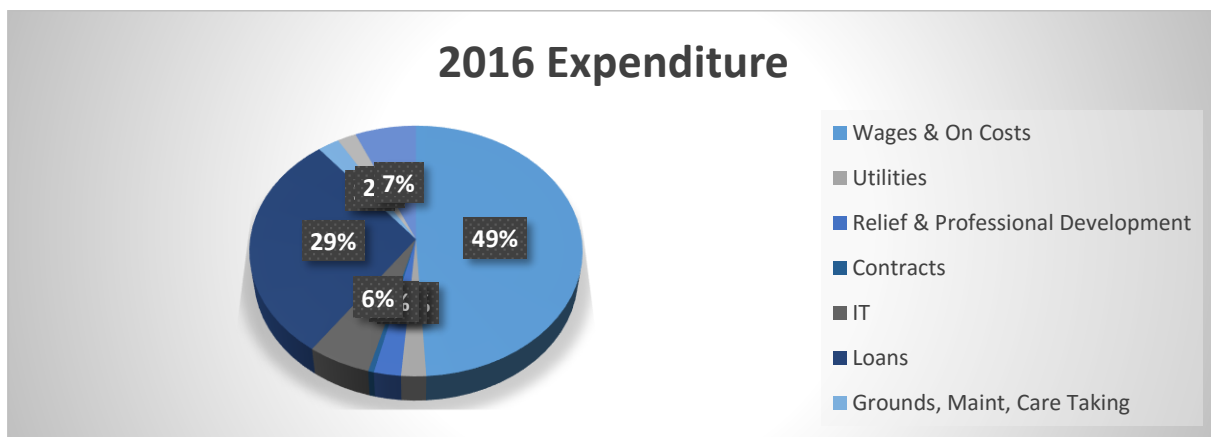
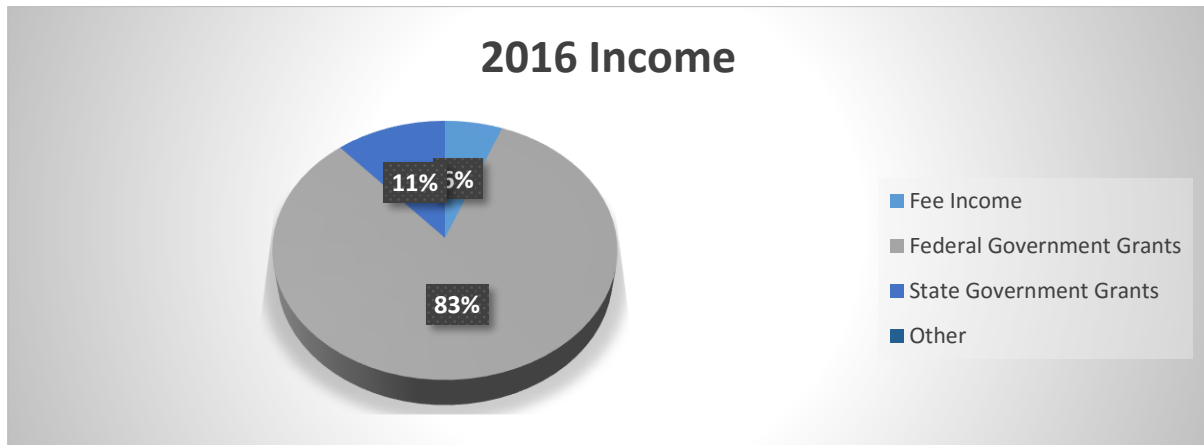
## **NAPLAN Information**

In 2017 we will only have kindergarten to year two, therefore NAPLAN will not occur in our school until 2018 school year.

## **Parent, Student and Teacher Satisfaction**

The data from the survey conducted in 2015 showed the parents were highly satisfied with Community, Engagement, Peer Relations, Students Behaviour and our Catholic Culture. Whilst within the Learning Opportunities, Learning Focus, Transitions and Homework were also highly satisfactory Extra Curricular Activities was lower. In 2016 the Principal Renewal Process was undertaken, during this process the Teachers, Education Assistants, Parents' and Friends' Association and the School Board reported that they were fully supportive of the Principal. They expressed satisfaction with the school, teaching and learning and the high standard of care of the students. The parents stated that the Principal continues to have a high profile and knows the children by name. They were also pleased with the effective communication between the parents, principal and teachers. Parents and visitors feel welcome into the school, often commenting on the welcome they receive from the Administration Officer, as well as the friendliness shown by all staff members.

## School Income



## The Annual School Improvement Plan 2016

The Strategic Direction for Catholic Education from 2014-2016 is defined by LEAD.

Learning (Education)

Engagement (Community)

Accountability (Stewardship)

Discipleship (Catholic Identity)

At its simplest level LEAD is defined in the following terms;

**LEARNING** is what we do. We are committed to learning at every level.

**ENGAGEMENT** is essential. We are committed to Catholic Education's mission through relationships with all.

**ACCOUNTABILITY** is not an option. We have personal and collective responsibility for our system's success.

**DISCIPLESHIP** is our calling. We are committed to deepening our relationship with Jesus.

## Our Key Focus Areas

### LEARNING

- Build Educational Excellence by providing the best possible learning context for the optimum development of phonological awareness and number recognition in our Early Years.
- All staff to develop and practise a common Early Childhood philosophy.

### ENGAGEMENT

- Build School and Parent Relationships by nurturing a social environment where students, parents and staff are safe, respected and supported.

### ACCOUNTABILITY

- Ensure all staff engage in work practices that are safe by nominating a staff member to be trained as an Occupational Health and Safety Officer.
- Maintain a responsible budget with a priority on the strategic goals.

### DISCIPLESHIP

- Inspire students to know, understand and live out the gospel values by focusing on our core values and sharing Jesus' life through simple gospel stories.
- Increase our enrolments in accordance with faith in action by advertising through Community Newspapers, Newsletters, Website, Day Care Centres and encourage "word of mouth".

To support our Annual School Improvement Plan we also use the Quality Catholic Schools Improvement Tool and the National Quality Standards Improvement Plan to assist us in constantly reviewing our progress, refining our strategies or informing our plans for the following year.